

THE
TRUST
For
OUR
LAND

***Why Parks
And Smart Growth
Go Together***

New Partners Conference, Baltimore
January 31, 2015

THE TRUST *for* PUBLIC LAND

LAND FOR PEOPLE



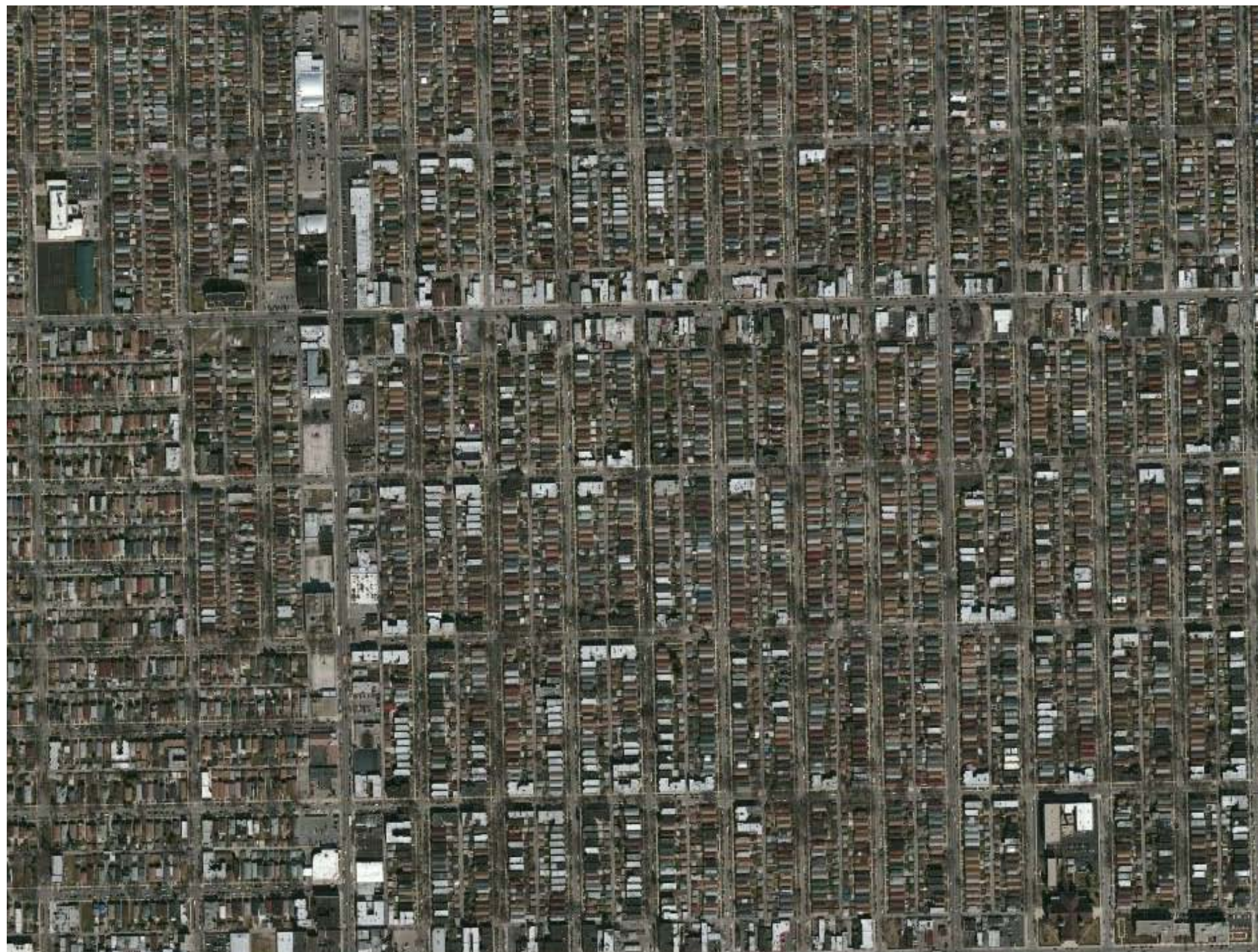






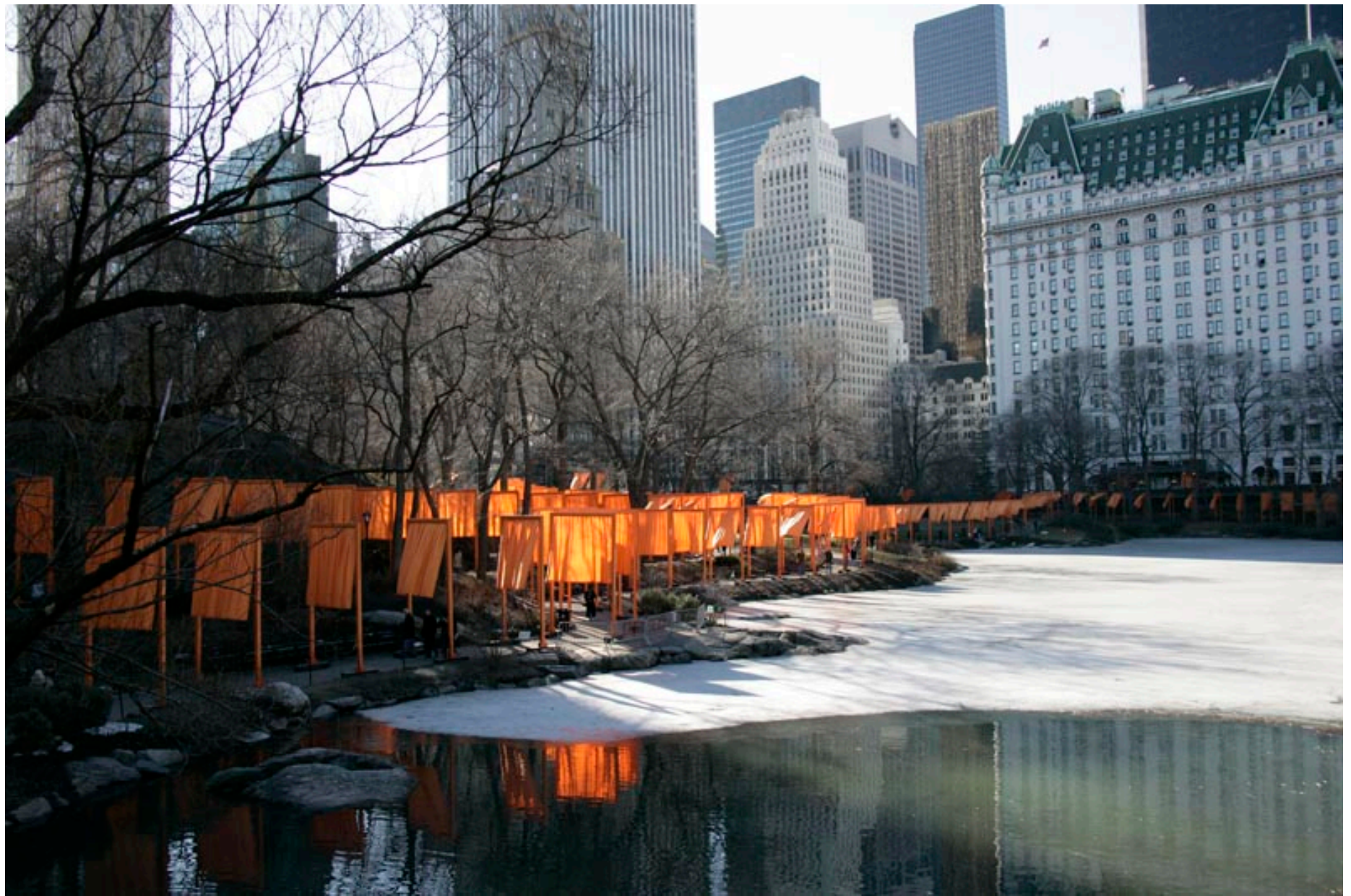
Steven Dunwell





























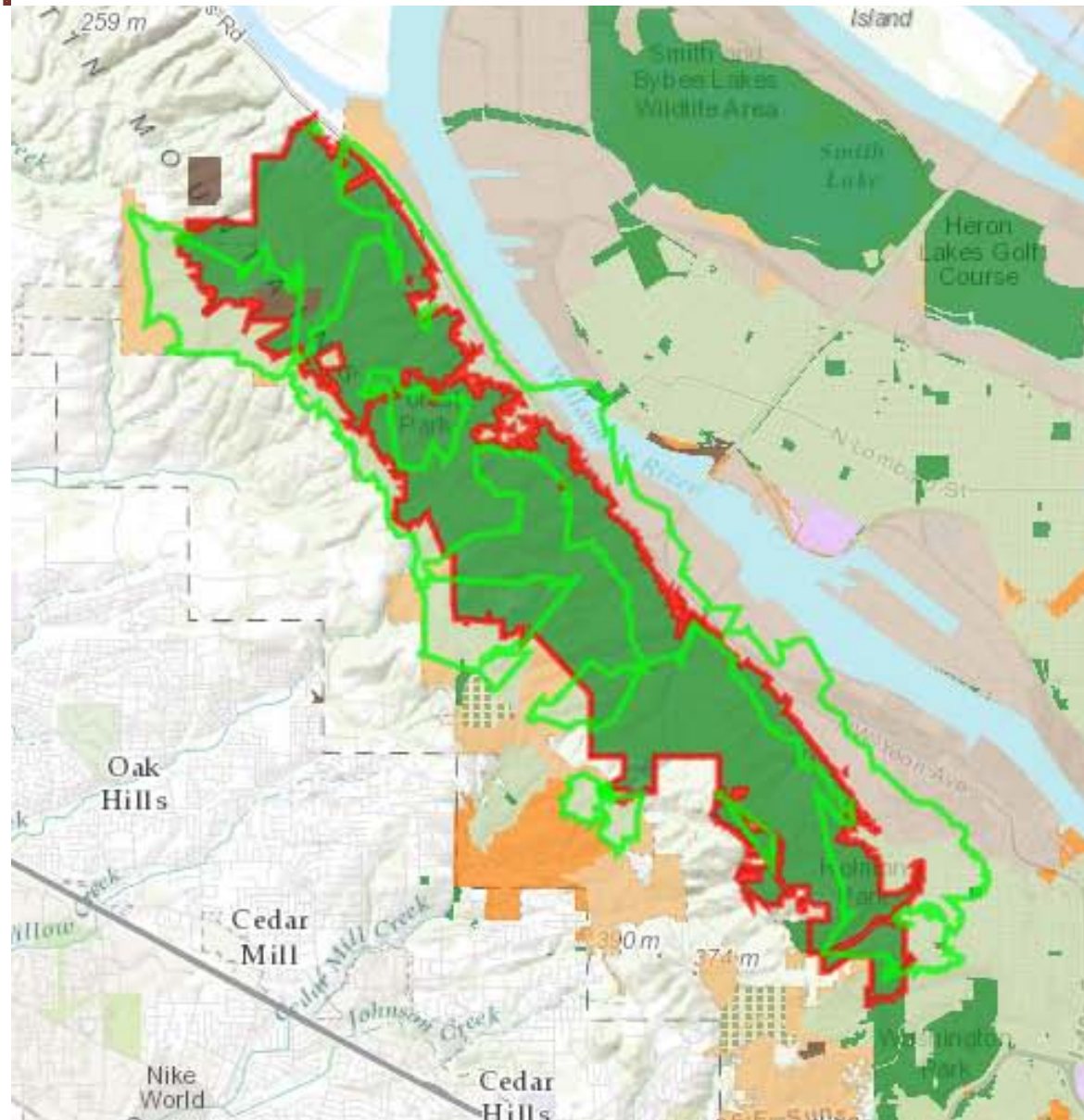


Forest Park

Portland, Oregon

Size: **5,032 acres**

People served within a
half-mile: **4,344**

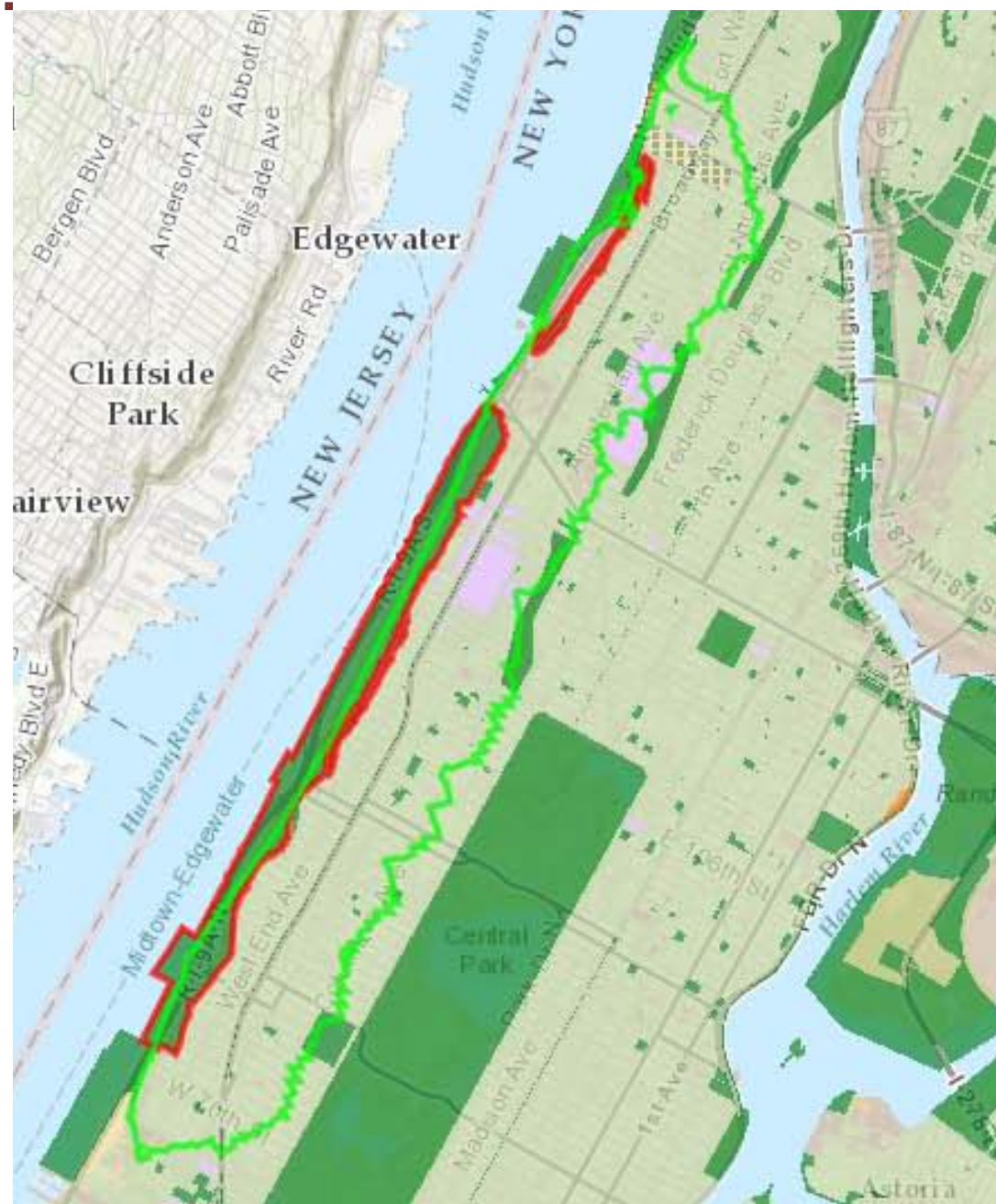


Riverside Park

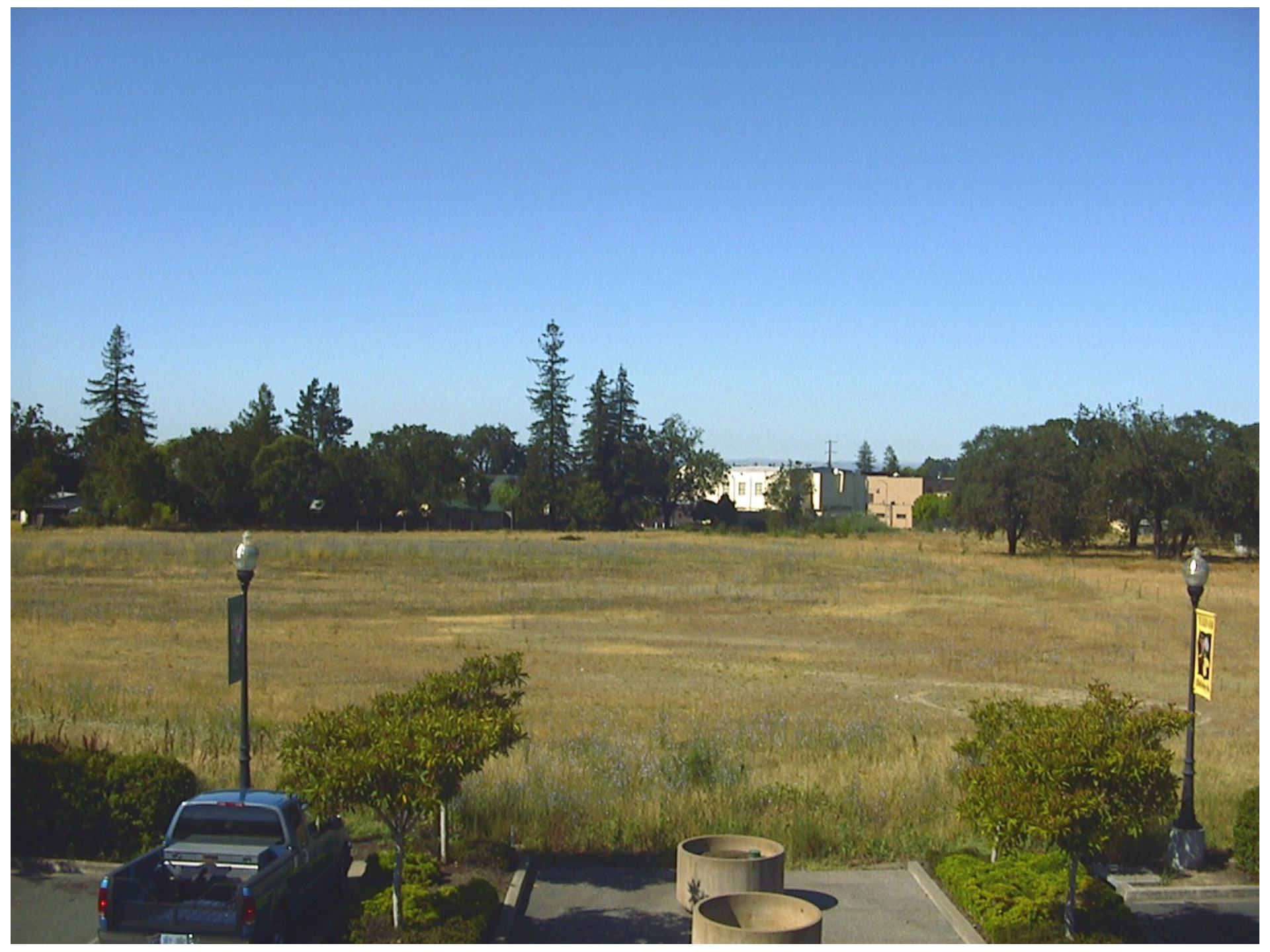
New York City

Size: **222 acres**

People served within a
half-mile: **259,000**



















THE
TRUST
For
OUR
LAND

Peter Harnik

Director

Center for City Park Excellence

peter.harnik@tpl.org

(202) 330-4725

THE TRUST *for* PUBLIC LAND

LAND FOR PEOPLE

